



Year 11 2022

Year Adviser – Ms Higgs

Deputy Principal – Mrs Woskanian



Welcome to 2022!



Expectations for the year group:

- Organisation is key
- Work ethic will define overall performance
- There is allwwaayyysss study/homework/revision/assessments to work on
- Year 11 has a responsibility to themselves
- Get to school on time, use the time in class as valuable time, "free periods" are study periods

Role of the support staff

- **SASS staff** – attendance, application of extended leave and administrative enquiries, payments over the phone

Online – parents can make payments, explain absences by calling the school number.

- **Counsellor & Learning Support staff** – learning and welfare issues. Counsellors are on site each day, students can self-refer or parents can ask wellbeing team to organise. Can communicate with external support and support students with a variety of issues.
- **Student Support Officer** - Candice works with individuals and small groups in wellbeing support.

Role of the year advisor

The **Year Advisor** is the link between welfare resources in the school, wider community, the student and the family.

The **Head Teacher Wellbeing** will become involved for case management for families and students for significant welfare concerns.

Academic and class related issues should first be directed to the teacher, then you may escalate to the head teacher

Classroom Teacher

- Concerns with students' academic progress in a particular subject
- Students behaviour with a particular CLAST

SPORT

- Sports organiser
- Sports teacher
- PDHPE faculty

Faculty Head Teacher

- Concerns with a classroom teacher in their faculty
- Increasing student behaviour concerns in the faculty
- Concerns with actions of other students in classes

Head Teacher Teaching & Learning

- IT support
- Technology

Year Advisor

- Minor student wellbeing concerns/issues
- Academic progress across a range of subjects
- Wellbeing events related to the year group



Liaise & communicate with Head Teacher Wellbeing and Counsellor where necessary

Learning & Support

- Learning difficulties across a range of faculties
- Student behaviour concerns across faculties

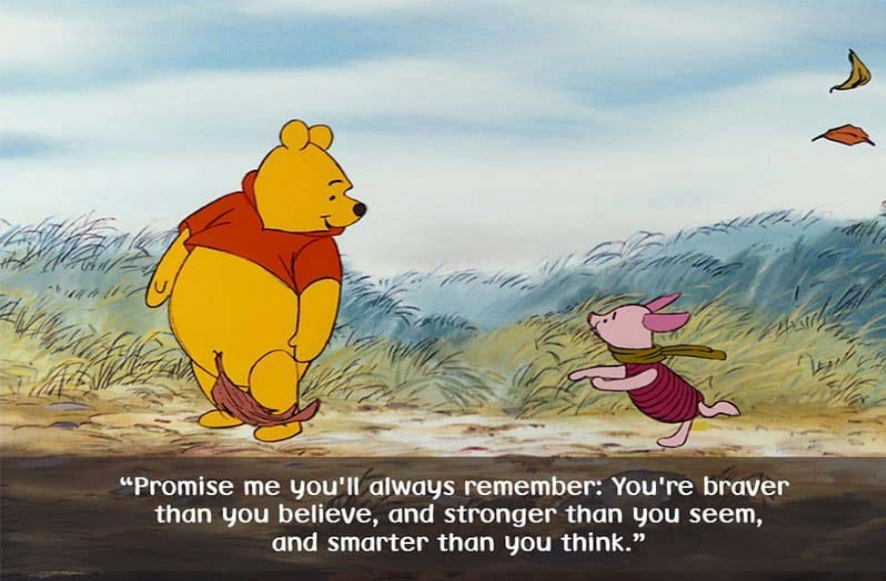


Careers

- Careers & transition enquiries
- Subject enquiries
- TAFE

Deputy Principal & Principal

- Significant and critical student wellbeing concerns/issues
- Increasing behavioural issues across multiple faculties
- Concerns with actions of other students in the playground or whilst travelling
- Serious concerns of actions of staff members
- Confidential issues
- Financial issues

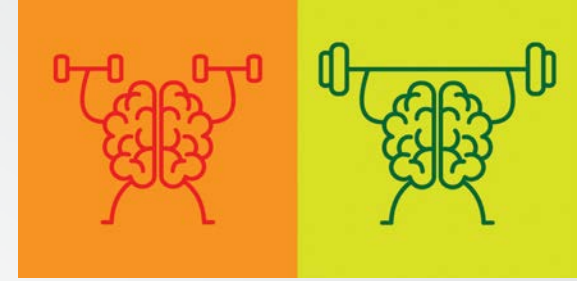


Wellbeing initiatives

- This year will be a focus on preparing students for their senior study. It is also an opportunity to maintain the foundations we have built over the last 5 years.
- Term 1 – Week 6 - Selection of Mentors
- Term 2 – Jersey finalisation
- Term 3 – Week 1 – Life Ready (GPs visit, RYDA, Life Lessons)
- Term 3 – Week 6 – Prefect speeches
- Term 3 – Week 10 – Luna Park fun day



Tips for Success



- Not only do we want to see our students achieve well at an academic level, but, we also want to see our students grow into healthy, happy students who succeed at life. Tips for a healthy wellbeing include:
 - Sleep is very important!
 - Technology can propel and hinder wellbeing
 - Get the yukky stuff out of the way before the good stuff
 - Time management is key!
 - Feedback
 - Get moving get active
- Socialising is just as important as studying

Study Habits

- Be mindful that there is a lot to achieve in the next 8 months
- Visual reminders for tasks: use a wall planner – all students have been issued with a school wall planner
- Quiet place for regular study
- Develop a study habit
- Include revision

Assessment Preparation

- Be organised, know due dates!
- Plan early – proof read and edit
- In the lead up to assessments use study periods to organise notes and resources
- Ask questions, seek advice
- Read through tasks carefully
- Look at the marking criteria



Lifestyle

- Healthy meals
- Regular exercise
- Downtime from technology
- Limit employment to 8 hours a week
- Do not plan holidays during the final two weeks of Term 3 because Yearly Exams are on.



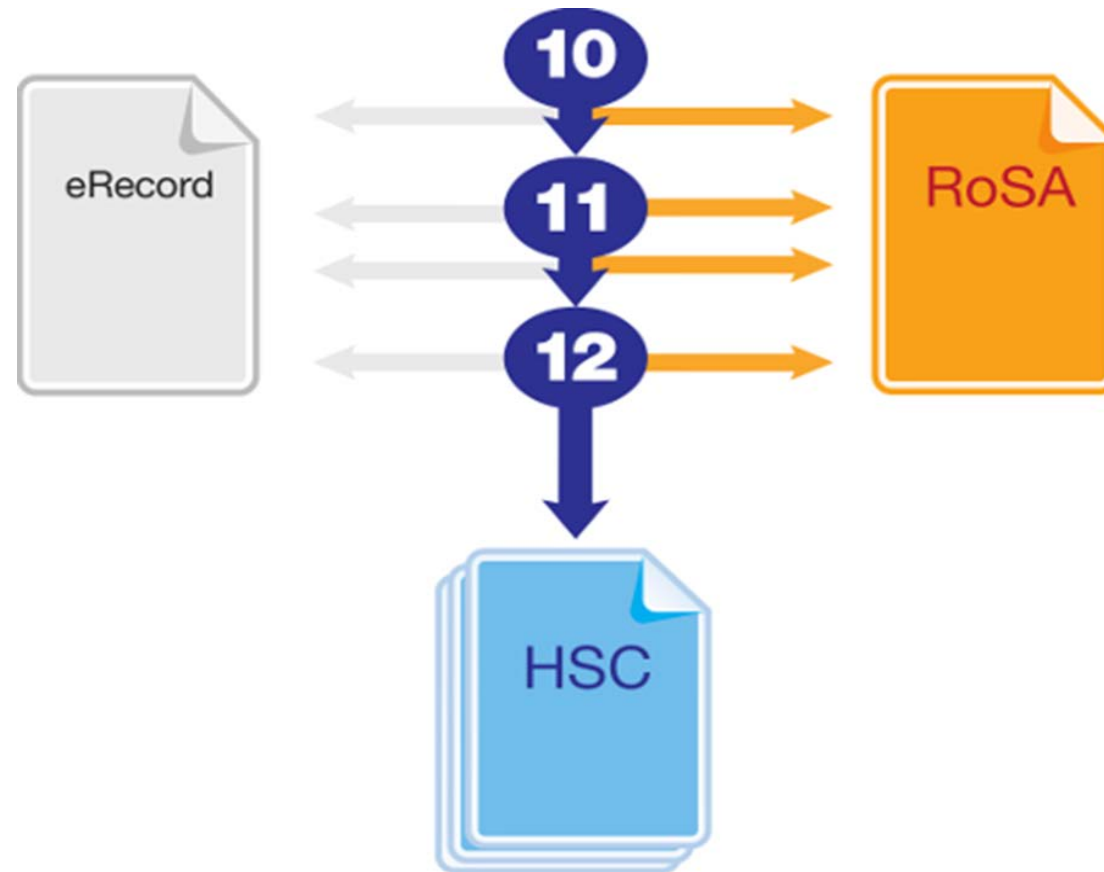
Resources to utilise



- Reducing stress - <https://www.beyondblue.org.au/get-support/staying-well/reducing-stress>
- Mindfulness - <https://www.beyondblue.org.au/personal-best/pillar/wellbeing/what-is-mindfulness>
- Sleep and why it is important - <https://kidshelpline.com.au/teens/issues/why-sleep-so-important>
- Year 11 KHHS information - <https://killarney-h.schools.nsw.gov.au/year-information/year-11.html>

HSC Credentials

Record of School Achievement



NSW HSC Testamur



HSC Record of Achievement

Most BDC HSC courses listed with Assessment Mark,
Examination Mark, HSC Mark and Performance Band

Stage 6 HSC Courses

HIGHER SCHOOL CERTIFICATE
Record of Achievement

NSW Education Standards Authority

This is to certify that Sample Student of Sample High School has met the requirements of the Higher School Certificate and has received the results shown below.

Year	Course	Examination Mark (%)	Assessment Mark (%)	HSC Mark	Performance Band
Board Developed Courses					
2016	Business Services (3 unit)	Refer to 'Additional Information' section of the Profile of Study (A document)			
	Service Life Skills (2 unit)	44/100	48/100	N/A	B
2017	Legal Services (3 unit)	Refer to 'Additional Information' section of the Profile of Study (A document)			
Board Endorsed Courses					
2017	English Studies (2 unit)	N/A	45/100	N/A	N/A
	Sport, Lifestyle and Recreation Studies (2 unit)	N/A	79/100	N/A	N/A

English Studies has been deemed equivalent to a Board Developed course in English for the purposes of this eligibility.

Student Number: 21667100

NSW Education Standards Authority

Stage 6 Preliminary Courses

HIGHER SCHOOL CERTIFICATE
Record of Achievement

NSW Education Standards Authority

This is to certify that Sample Student of Sample High School has met the requirements of the Higher School Certificate and has received the results shown below.

Year	Course	Result
Board Developed Courses		
2017	Business Studies (2 unit)	A
	Design and Technology (2 unit)	B
	English Advanced (2 unit)	B
	Mathematics (2 unit)	C
	Mathematics Extension (2 unit)	C
	Physics (2 unit)	C
	Studies of Religion (2 unit)	C
	Visual Arts (2 unit)	B

Student Number: [Signature]

NSW Education Standards Authority

Stage 5 Courses

HIGHER SCHOOL CERTIFICATE
Record of Achievement

NSW Education Standards Authority

This is to certify that Sample Student of Sample High School has met the requirements of the Record of School Achievement and has received the results shown below.

Year	Course	Result
Board Developed Courses		
2016	English (200)	C
	Mathematics (200)	CE
	Science (200)	B
	Australian Geography (100)	B
	History (200)	B
	Commerce (200)	A
	Visual Arts (200)	A
	Personal Development, Health and P.E. (100)	A
Board Endorsed Courses		
2016	Religion, Catholic Studies (200)	B
Years 7 to 10 Mandatory Curriculum Requirements		
	English	Completed
	Mathematics	Completed
	Science	Completed
	Human, Social and its Environment	Completed
	Language	Completed
	Technology	Completed
	Music	Completed
	Visual Arts	Completed
	Personal Development, Health and P.E.	Completed

Student Number: [Signature]

NSW Education Standards Authority

All Preliminary and Stage 5 courses will be on separate certificates

Australian Tertiary Admission Rank

The Australian Tertiary Admission Rank (ATAR):

- is for students wishing to gain a place at a university
- is a rank **NOT** a mark
- provides information about how a student performs overall in relation to other students

The Higher School Certificate

- is the culmination of a student's school career
- is the highest educational award that can be achieved at secondary school in NSW
- reports student achievement in terms of a **standard** achieved in individual courses
- presents a **profile** of student achievement across a broad range of subjects

Requirements for the HSC

Year 11

- minimum of **12 units**
- students must satisfactorily **complete** the Year 11 course before commencing the corresponding Year 12 course

Year 12

- minimum of **10 units**

SATISFACTORY COMPLETION OF A COURSE

- Students must:
 - **follow the course** developed or endorsed by NESA
 - **apply themselves** with diligence and sustained effort to the set tasks and experiences provided in the course by the school, and
 - **achieve** some or all of the course outcomes
- VET Board Developed Courses require students to complete **mandatory work placement**

ADDITIONAL COMPLETION REQUIREMENTS FOR HSC COURSES

Students must:

- complete HSC assessment tasks that contribute in **excess of 50 per cent** of available marks in courses where internal assessment marks are submitted, and
- sit for and make a **serious attempt** at any requisite Higher School Certificate examinations for a course

More Information

www.educationstandards.nsw.edu.au

www.uac.edu.au

PATHWAYS TO YOUR FUTURE

Where to go?
What to do?
How to get there?

OPTIONS

- UNI
- TAFE
- APPRENTICESHIP
- PRIVATE COLLEGE (Whitehouse, Think, AIE)
- GAP YEAR
- WORK
- TRAVEL
- ???

Tertiary Pathways – general observations

- There are many pathways into university studies
- Vocational learning (TAFE and apprenticeships) is a realistic, practical and rewarding option
- Apprenticeships – valuable, practical learning on the job to gain an industry based qualification – paid to learn. NO ATAR required

PLAN AHEAD

YEAR 11

- Be organised (desk space, subject folders, time management)
- Study smart! (avoid interruptions, mobile phone outside room)
- Use a diary/whiteboard
- Timetable school assessments, social engagements and sporting activities
- Manage work commitments
- Manage stress and anxiety (mentors, outside agencies, headspace etc)
- Apply for **Tax File number**

- (remember that ‘Procrastination is the thief of time!’)

YEAR 11

- Prepare in advance (talk to others)
- Make an appointment with me
- Do research early on courses, early entry pathways
- Visit UNI OPEN days in yr 11 (usually in August/September)
- Investigate scholarship opportunities and know the requirements
(community service, extra curricular activities etc)
- Use the **school careers website**
<http://www.killarneyheightshscareers.com/>
- READ the CAREERS NEWSLETTER

UNI REQUIREMENTS

- Must be eligible for an ATAR (Australian Tertiary Admissions Rank)
- Must apply through UAC (Universities Admission Centre)
- Must meet the Uni requirements
- Examples include
- Need to do UCAT (Undergraduate Clinical Admissions Test)
- May need to do LAT (Law Admissions Test)

School Recommendation Scheme

Sometimes called Principal Recommendation Scheme or Early Entry Scheme

- Some universities have schemes whereby candidates apply and receive offers before results are released.
- Approximately for 9 universities the process involves UAC (called SRS)
 - * Australian National University
 - * Macquarie University
 - * University of Technology Sydney (EAS)
 - * Western Sydney University
 - * University of New England
 - * University of Canberra
 - * University of Newcastle
 - * Charles Sturt University
 - * Southern Cross University

SRS offers are usually made before HSC exams

Scholarships

- Many different types eg
 - Industry (often called Co-op)
 - merit,
 - equity (through UAC)
 - many others through universities (before and after enrolment)

Look at your extracurricular activities such as sport, Duke of Ed, volunteering etc and other community activities

- Find them on university websites

Alternative Entry

(look in “Alternative entry and pathways” section of each uni in UAC book)

- Some universities have private colleges as an entry point

e.g. UTS has Insearch, Macquarie Uni has International College Diploma, WSU has The College – “University foundation Studies” .

- Macquarie has “Next Step” and internal transfer
- STAT test – most unis(usually a year after HSC studies)age limit of 20 yr may apply.
- TAFE – tertiary preparation course or accumulate HSC subjects
- TAFE – Diploma (even Cert IV) can enable access to university
- Uni of Newcastle –Newstep (takes one year and is free)
- Private colleges have arrangements with some universities
- Notre Dame University application and interview also “Young Achievers – Early Offer”
- UNSW enabling courses eg Business, Science, Arts and Social Sciences

Other pathways to a degree

- Degrees at **TAFE** – TAFE colleges offer degree courses in areas such as IT security, Hotel Management, Fashion Design, Interior Design, Early Childhood Education and Care.
- More practical – vocational courses.
- A **Diploma** in nursing at TAFE can often take one year off uni course.
- Degrees at **private** colleges eg Torrens University, ICMS, Macleay College.

TAFE (cont)

- Research online. Start researching before the end October
- Apply (in most cases) online, you may have to attend an information session in November.
- All TAFE colleges have Course and Career Counsellors
- Costs vary greatly and many are government subsidised under Smart and Skilled scheme for Certificate 2,3, and 4 (especially for school leavers)
- VET Fee Loan Help available many diploma courses.
- TAFE is all about preparing people for employment.

Apprenticeships/Traineeships

- Learn and earn-
earn at work \$\$\$, learn at TAFE or private college
- No ATAR
- Nationally recognised qualification - Certificate 2, 3 Or 4 (Australian Qualifications Framework)
- Gain skills and industry experience
- Pathways to other careers
- Start up and own your own business(be the boss)

Please contact

Julie.McDermott@det.nsw.edu.au

- Google classroom careers for Yr 11 students **4ibz3at**
- Register on Careers website <http://www.killarneyheightshscareers.com>