



KILLARNEY
HEIGHTS
HIGH SCHOOL

HSC Information

Demystifying assessment, Scaling and ATARs

What does ATAR stand for?

▶ Australian Tertiary Admissions Rank

Why do you need an ATAR?



ATAR REQUIREMENTS

- To gain a ATAR at least 10 units must be *Board Developed* courses.
- Only one category “B” course can be included. These are “VET Courses” offered at school.

Note: if gaining a ATAR, students are recommended to attempt 12 units in Year 12, although this is not essential.

HSC MARKS

- ▶ 50% from the exam
- ▶ 50% school based assessment tasks

Before a student gets to the exam -
half their marks are already decided.

SCALING OF MARKS

- ▶ Scaling of HSC marks is done by the University Admissions Centre, not NESAs
- ▶ Scaling is an attempt to even out the differences in difficulty in subjects

SCALING OF MARKS

- ▶ The goal is to gain the highest rank you possibly can in each and every subject.
- ▶ Here's why...

Information Processes and Technology 2013

	Name	School Assess.	Moderated Assess	Exam Rank	Exam Mark	HSC mark
1	Gail	84	95	2	92	94
2	Di	81	94	1	95	95
3	Roger	79	93	2	92	93
4	Peter	72	91	2	92	92
5	Janelle	71	91	7	88	90
6	Jenny	70	91	5	91	91
7	James	66	88	7	86	87
8	David	66	88	11	84	86
9	Jane V	65	87	15	79	83
10	Christine	63	86	9	86	86
11	Liz	62	85	8	87	86
12	Greg	61	84	12	81	83
13	Nico	59	82	10	85	84
14	Max	59	82	6	90	86
15	Janelle	57	80	18	74	77
16	Phil	54	78	13	79	79
17	Annie	54	78	13	79	79
18	Kathleen	40	65	19	64	65
19	Marie	39	64	15	79	72

Information Processes and Technology 2013

	Name	School Assess.	Moderated Assess	Exam Rank	Exam Mark	HSC mark
1	Gail	84	95	2	92	94
2	Di	81	94	1	95	95
3	Roger	79	93	2	92	93
4	Peter	72	91	2	92	92
5	Janelle	71	91	7	88	90
6	Jenny	70	91	5	91	91
7	James	66	88	7	86	87
8	David	66	87	11	84	86
9	Jane V	65	87	15	79	83
10	Christine	63	86	9	86	86
11	Liz	62	84	8	87	86
12	Greg	61	84	12	81	83
13	Nico	59	82	10	85	84
14	Max	59	78	6	90	86
15	Janelle	57	80	18	74	77
16	Phil	54	78	13	79	79
17	Annie	54	78	13	79	79
18	Kathleen	40	65	19	64	65
19	Marie	39	64	15	79	72

What is the ATAR?

- ▶ It is a **RANK** not a mark
- ▶ Actually a rank between 0 and 99.95 that ranks you with your cohort that started in Year 7 with you
- ▶ An ATAR of 80 means that you are in the top 20% of your year group

Example of Marks

Student : Mary

ATAR : 92.00

Subject	School Assessment	Moderated Assessment	Scaled Exam Mark	HSC Mark
Business Studies	82	90	87	89
Legal Studies	90	92	87	90
Modern History	69	82	83	83
Advanced English	77	88	81	85
Visual Arts	87	95	92	94

Example of Marks

Student : John

ATAR : 84.05

Subject	School Assessment	Moderated Assessment	Scaled Exam Mark	HSC Mark
Biology	75	77	79	78
General Maths	75	82	85	84
Geography	79	89	87	88
Advanced English	74	84	82	83
Music 1	86	88	90	89

Report on Scaling of the 2017 NSW HSC

**REPORT ON THE
SCALING OF THE 2017
NSW HIGHER SCHOOL
CERTIFICATE**



[Scaling Report](#)

Scott's marks

Subject	HSC	ATAR
▶ English Advanced	78	61
▶ Ancient History	83	64
▶ Biology	75	56
▶ Business Studies	80	60
▶ General Maths	68	37
▶ PD,H,PE	81	60

Total 301

▶ ATAR = **77.5**

Eve's marks

Subject	HSC	ATAR
▶ English Advanced	75	52
▶ Biology	87	78
▶ Chemistry	75	65
▶ Earth & Environment	89	75
▶ Mathematics	68	49
	Total	319

▶ ATAR = **81.6**

Heather's marks

Subject	HSC	ATAR
▶ English Advanced	86	76
▶ Modern History	89	80
▶ Economics	88	84
▶ Business Studies	96	90
▶ Mathematics	76	60
▶ Legal Studies	92	82

Total 412

▶ ATAR = **96.5**

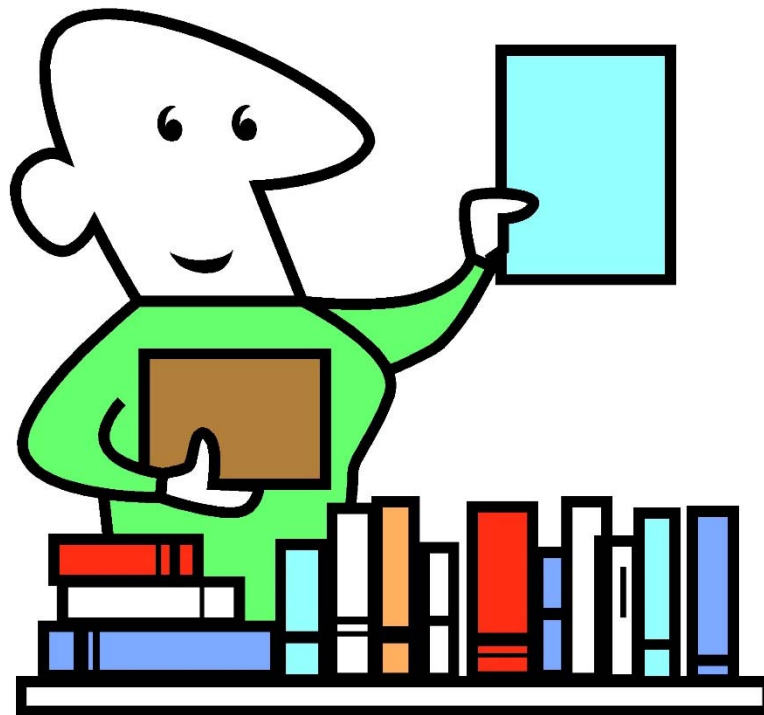
Table A9 Relationship between the ATAR and aggregates: 2013–2017

Note: This table shows the lowest aggregate of scaled marks corresponding to each of the selected ATARs.

ATAR	Lowest aggregate				
	2013	2014	2015	2016	2017
99.95	477.9	475.3	478.1	476.6	477.1
99.50	455.0	454.0	457.9	455.8	457.1
99.00	443.8	444.5	446.9	446.0	446.6
98.00	429.5	431.2	432.4	431.2	432.2
95.00	402.6	404.4	404.2	403.8	404.1
90.00	371.3	372.2	371.2	371.7	372.4
85.00	344.8	345.1	343.8	345.3	344.8
80.00	321.3	320.6	319.9	320.6	319.9
75.00	297.9	296.9	297.0	297.5	296.2
70.00	276.1	275.0	274.8	275.1	273.3
65.00	253.5	253.3	253.1	253.4	249.4
60.00	232.2	231.9	231.4	231.4	226.6
55.00	211.3	210.8	211.4	210.9	204.2

How to help

- ▶ Help your son or daughter to be organised



How to help

- ▶ Start major works early



How to help

- ▶ Become familiar with the assessment handbook (including policy and schedule) which is available from the School Years Tab/page on the school website. Hard copy already handed to students.

How to help

- ▶ Put dates on a calendar

December 2016

S	M	T	W	T	F	S
				1	2	3
4	5	6	7	8	9 X	10 X
11 X	12	13	14	15	16	17
18	19	20	21	22	23	24
25	26	27	28	29	30	31

How to help

- ▶ Dont go away
- ▶ July holidays
- ▶ in 2019



How to help

- ▶ Remember you can't do
- ▶ It for them!

